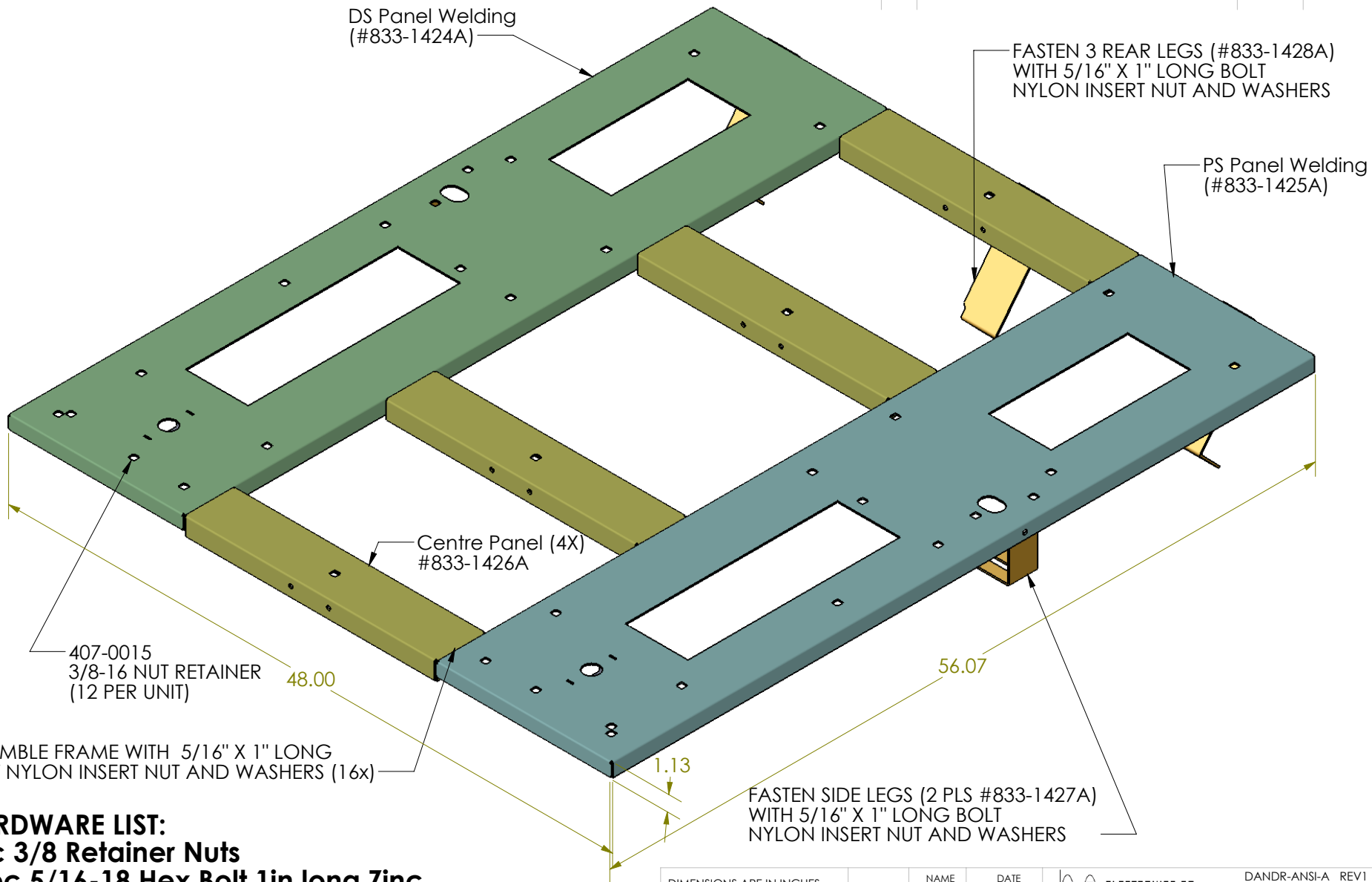



REV.	DESCRIPTION	DATE	APPROVED



ASSEMBLE FRAME WITH 5/16" X 1" LONG BOLT NYLON INSERT NUT AND WASHERS (16x)

HARDWARE LIST:

- 8pc 3/8 Retainer Nuts
- 21pc 5/16-18 Hex Bolt 1in long Zinc
- 42pc Flat Washer Zinc
- 21pc 5/16 Nyloc Nut Zinc
- 2pc 3/8-16 Hex Bolt 1in long SS
- 4pc 3/8 Fender Washer SS
- 2pc 3/8-16 Nyloc Nut SS
- 5pc FORD Bolt W708175

DIMENSIONS ARE IN INCHES TOLERANCES: FRACTIONAL ± 1/32 ANGULAR: ± .10° TWO PLACE DECIMAL ± .010 THREE PLACE DECIMAL ± .005		NAME BW	DATE 7 NOV 14	 DANDR-ANSI-A REV1 APRIL 23, 2007
MATERIAL 12 ga CRS	CHECKED AD	DATE 7 NOV 14	2015 Expedition MAX Subframe Path: Y:\MECH ENG\MECH_DESIGN\2015 Ford Expedition MAX Subframe\ File: 933-0114A Date: December-11-14 10:26:12 AM SIZE DWG. NO. A 933-0114A REV. 0	
FINISH Midnight Black Wrinkle	COMMENTS:			USED ON: