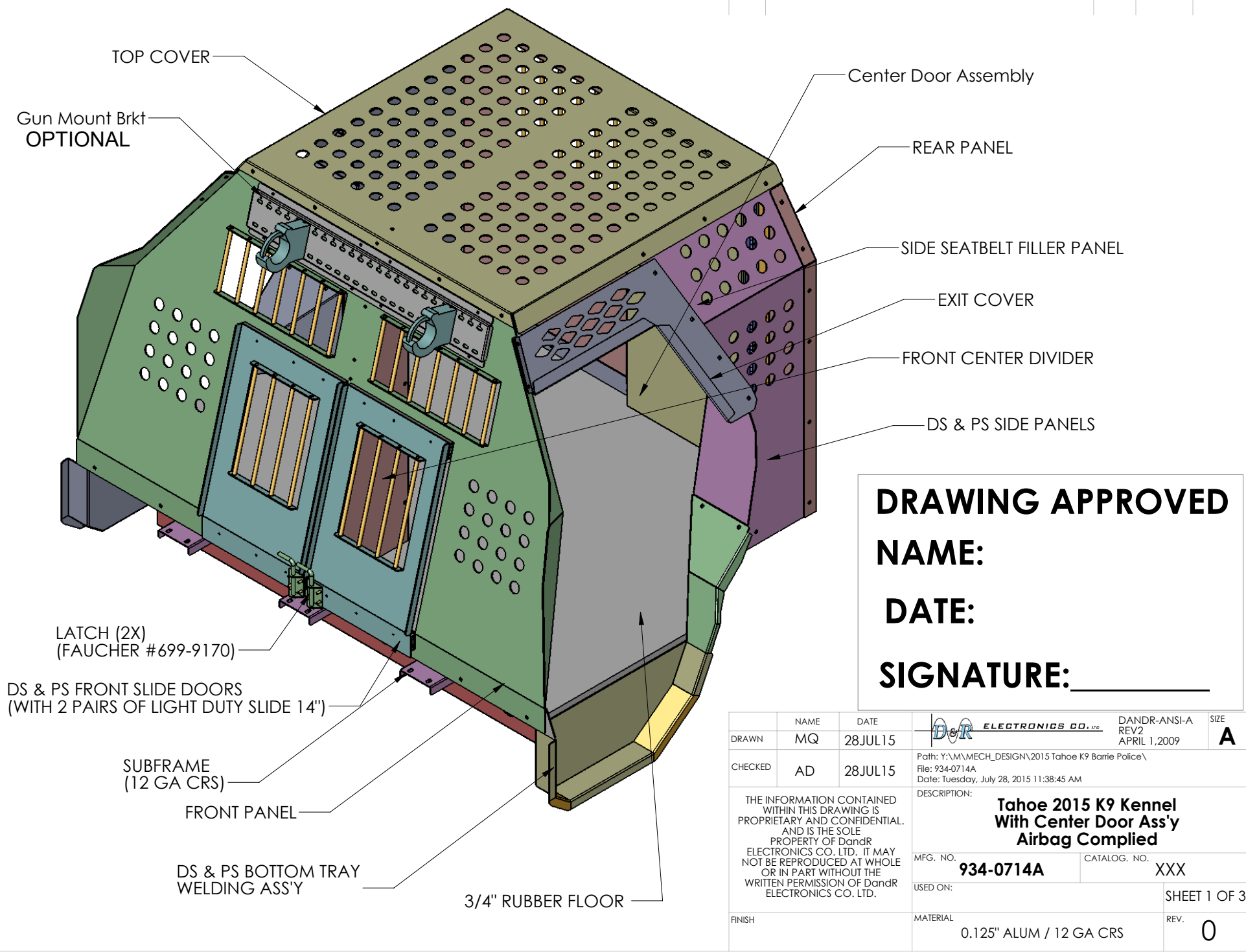


REV.	DESCRIPTION	BY	DATE	APPROVED

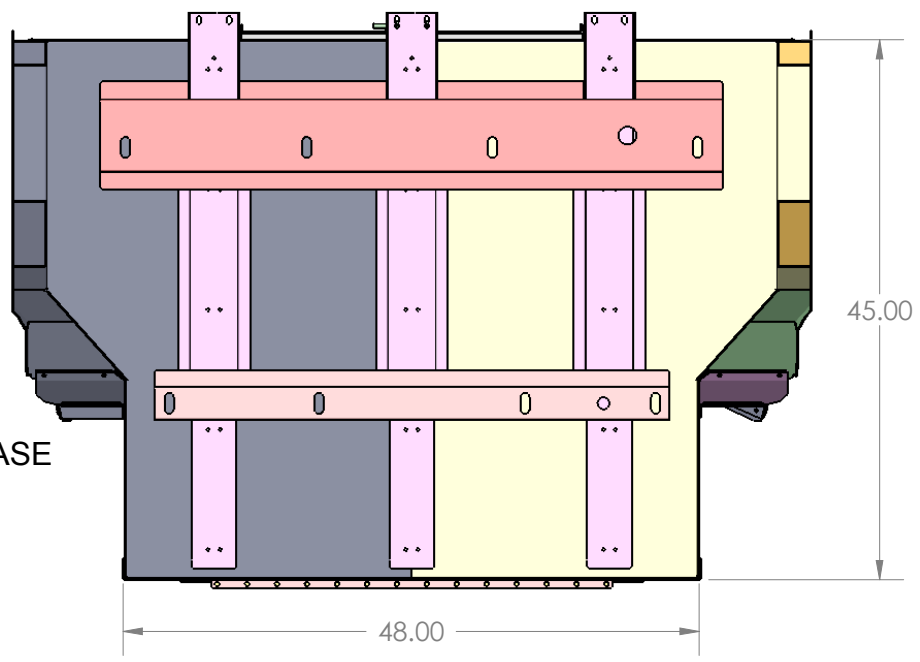
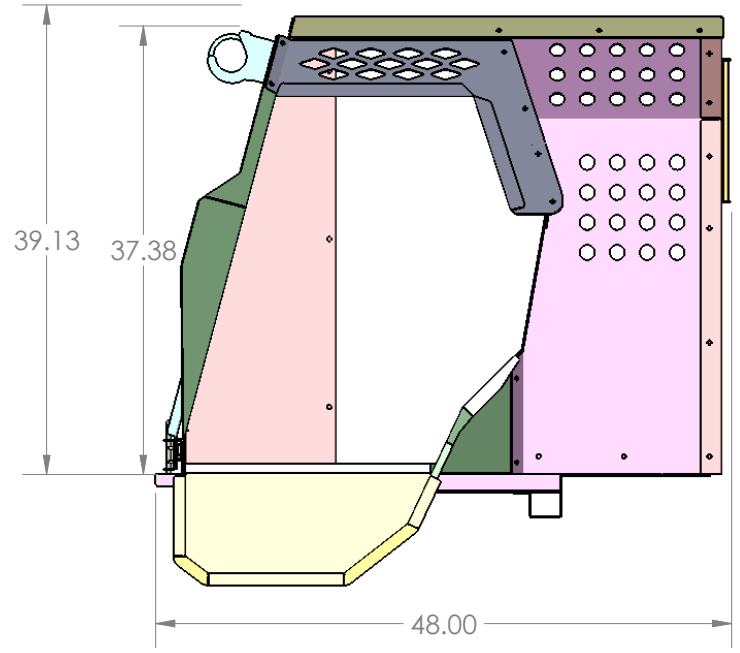
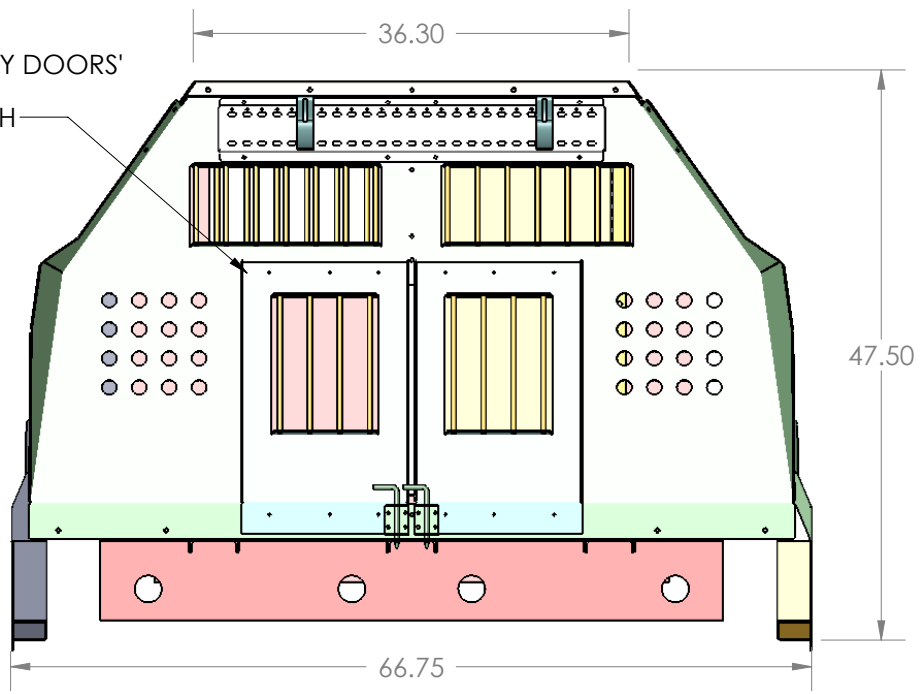


DRAWING APPROVED
NAME: _____
DATE: _____
SIGNATURE: _____

DRAWN	NAME MQ	DATE 28JUL15	ELECTRONICS CO., LTD. DANDR-ANSI-A REV2 APRIL 1, 2009	SIZE A
CHECKED	AD	28JUL15		Path: Y:\M\MECH_DESIGN\2015 Tahoe K9 Barrie Police\ File: 934-0714A Date: Tuesday, July 28, 2015 11:38:45 AM
THE INFORMATION CONTAINED WITHIN THIS DRAWING IS PROPRIETARY AND CONFIDENTIAL AND IS THE SOLE PROPERTY OF DandR ELECTRONICS CO. LTD. IT MAY NOT BE REPRODUCED AT WHOLE OR IN PART WITHOUT THE WRITTEN PERMISSION OF DandR ELECTRONICS CO. LTD.			DESCRIPTION: Tahoe 2015 K9 Kennel With Center Door Ass'y Airbag Complied	
FINISH			MFG. NO. 934-0714A USED ON:	CATALOG. NO. XXX SHEET 1 OF 3
			MATERIAL 0.125" ALUM / 12 GA CRS	REV. 0

REV.	DESCRIPTION	BY	DATE	APPROVED

EMERGENCY DOORS' OPENING:
14" W X 19" H

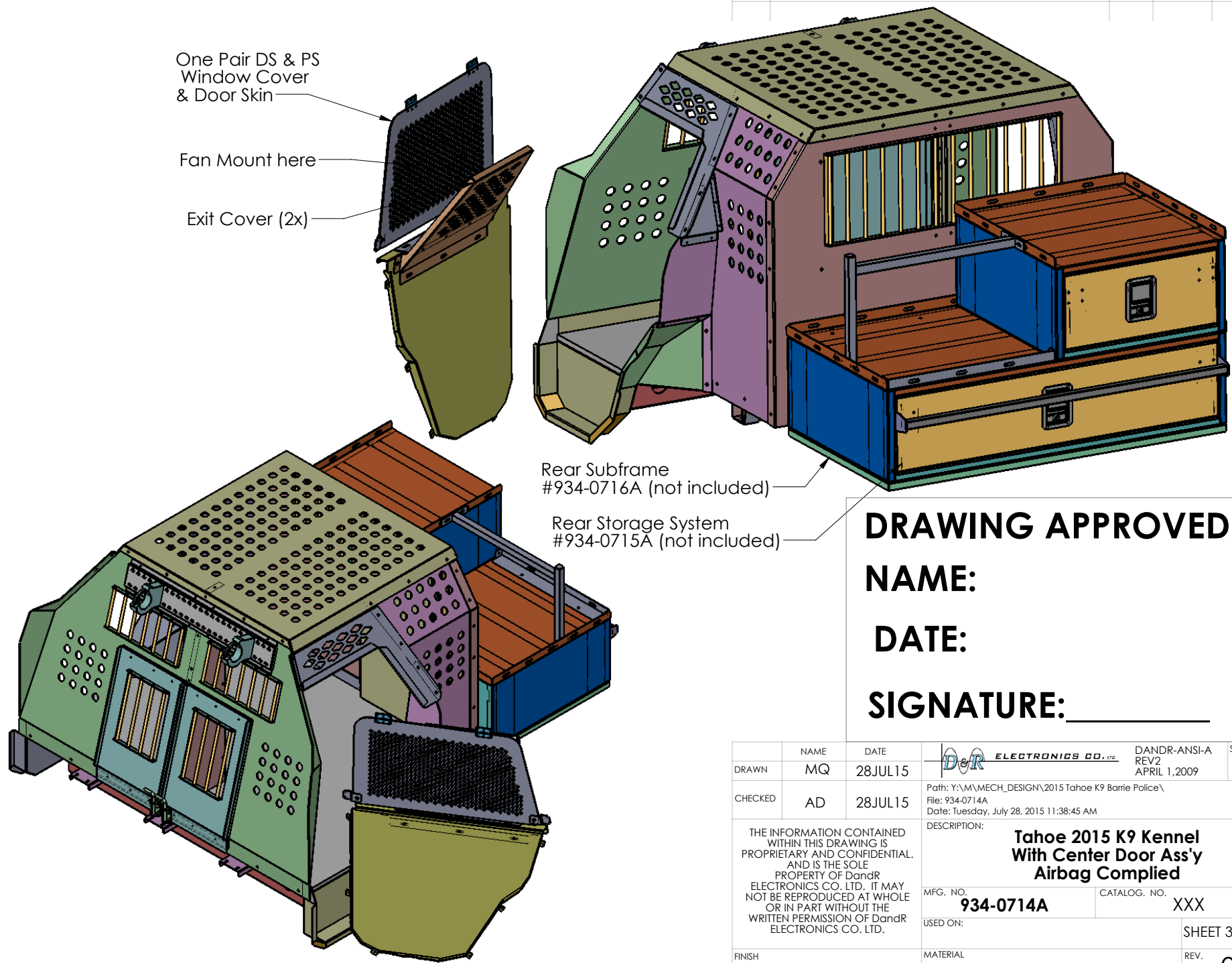


OUTER BASE VIEW

DRAWING APPROVED
NAME: _____
DATE: _____
SIGNATURE: _____

DRAWN	NAME MQ	DATE 28JUL15	DANDR ELECTRONICS CO., LTD. Path: Y:\M\MECH_DESIGN\2015 Tahoe K9 Barrie Police\ File: 934-0714A Date: Tuesday, July 28, 2015 11:38:45 AM	DANDR-ANSI-A REV2 APRIL 1,2009	SIZE A
CHECKED	AD	28JUL15		DESCRIPTION: Tahoe 2015 K9 Kennel With Center Door Ass'y Airbag Complied	MFG. NO. 934-0714A
FINISH	MATERIAL 0.125" ALUM / 12 GA CRS		USED ON:		SHEET 2 OF 3
					REV. 0

REV.	DESCRIPTION	BY	DATE	APPROVED



DRAWING APPROVED

NAME:

DATE:

SIGNATURE: _____

NAME	DATE	DANDR ELECTRONICS CO., LTD.		DANDR-ANSI-A	SIZE
DRAWN MQ	28JUL15	DandR		REV2 APRIL 1, 2009	A
CHECKED AD	28JUL15	Path: Y:\M\MECH_DESIGN\2015 Tahoe K9 Barrie Police\ File: 934-0714A Date: Tuesday, July 28, 2015 11:38:45 AM			
THE INFORMATION CONTAINED WITHIN THIS DRAWING IS PROPRIETARY AND CONFIDENTIAL. AND IS THE SOLE PROPERTY OF DandR ELECTRONICS CO., LTD. IT MAY NOT BE REPRODUCED AT WHOLE OR IN PART WITHOUT THE WRITTEN PERMISSION OF DandR ELECTRONICS CO., LTD.		DESCRIPTION: Tahoe 2015 K9 Kennel With Center Door Ass'y Airbag Complied			
FINISH		MFG. NO.	CATALOG. NO.		
		934-0714A	XXX		
		USED ON:	SHEET 3 OF 3		
		MATERIAL	REV.		0
		0.125" ALUM / 12 GA CRS			